

# GEOGRAPHIC ATROPHY (GA): By the Numbers

SEE **GA** DIFFERENTLY

GA is an advanced form of age-related macular degeneration (AMD) that can cause irreversible vision loss.<sup>1</sup>

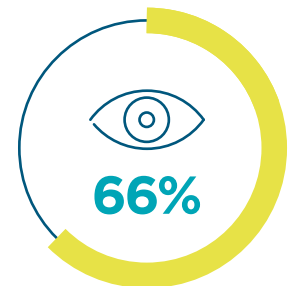
## A bigger burden than you may realize



people in the United States  
are currently affected by GA<sup>2</sup>



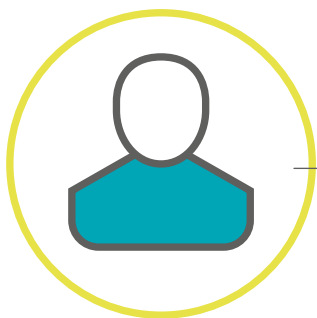
of people with GA in the  
United States are believed  
to be undiagnosed<sup>3</sup>



of eyes with GA may become  
**blind or severely visually  
impaired without treatment**<sup>4</sup>

## Anyone can be affected

These risk factors increase the likelihood of GA, but it can occur in any patient:



Age  $\geq$ 55 years<sup>5</sup>



Caucasian descent<sup>6</sup>



Active smoker<sup>6-9</sup>



Hypertension/CVD<sup>6,7</sup>



High-fat diet<sup>5</sup>

## Patients lose more than just vision



require assistance with daily activities<sup>10</sup>



report difficulty reading<sup>11</sup>



lose confidence driving at night<sup>10</sup>

## Impacts patients faster than you think



In **1.6 years** after diagnosis, **67%** of people with GA lose their ability to drive<sup>12</sup>

Extrafoveal lesions can progress to foveal involvement in **2.5 years**<sup>13</sup>



### 2 years after enrollment in a GA study<sup>14</sup>:

**75%** OF PATIENTS

**5 LETTERS**  
(1 line) of vision



**50%** OF PATIENTS

**LOST**

**10 LETTERS**  
(2 lines) of vision



**25%** OF PATIENTS

**15 LETTERS**  
(3 lines) of vision



Scan here to find more resources created in partnership with the eye care community or visit [seeGAdifferently.com/info](https://seeGAdifferently.com/info)

CVD=cardiovascular disease.

**References:** 1. Boyer DS, Schmidt-Erfurth U, van Lookeren Campagne, Henry EC, Brittain C. The pathophysiology of geographic atrophy secondary to age-related macular degeneration and the complement pathway as a therapeutic target. *Retina*. 2017;37(5):819-835. 2. Jaffe GJ, Westby K, Csaky KG, et al. *Ophthalmology*. 2021;128(4):576-586. 3. IQVIA Medical Claims (Dx) Data Jan20-Dec21: 24 Months. 4. Colijn JM, Liefers B, Joachim N, et al. Enlargement of geographic atrophy from first diagnosis to end of life. *JAMA Ophthalmol*. 2021;139(7):743-750. 5. Flaxel CJ, Adelman RA, Bailey ST, et al. Age-related macular degeneration Preferred Practice Pattern®. *Ophthalmology*. 2020;127(1):P1-P65. 6. Vellila S, Garcia-Medina JJ, Garcia-Layana A, et al. Smoking and age-related macular degeneration: review and update. *J Ophthalmol*. 2013;2013:895147. 7. Holz FG, Strauss EC, Schmitz-Valckenberg S, van Lookeren Campagne M. Geographic atrophy: clinical features and potential therapeutic approaches. *Ophthalmology*. 2014;121(5):1079-1091. 8. Heesterbeek TJ, Lores-Motta L, Hoyng CB, Lechanteur YTE, den Hollander AL. Risk factors for progression of age-related macular degeneration. *Ophthalmic Physiol Opt*. 2020;40(2):140-170. 9. Sadda SR, Chakravarthy U, Birch DG, Staurenghi G, Henry EC, Brittain C. Clinical endpoints for the study of geographic atrophy secondary to age-related macular degeneration. *Retina*. 2016;36(10):1806-1822. 10. Patel PJ, Ziemssen F, Ng E, et al. Burden of illness in geographic atrophy: a study of vision-related quality of life and health care resource use. *Clin Ophthalmol*. 2020;14:15-28. 11. Singh RP, Patel SS, Nielsen JS, Schmier JK, Rajput Y. Patient-, caregiver-, and eye care professional-reported burden of geographic atrophy secondary to age-related macular degeneration. *Am J Ophthalmol Clin Trials*. 2019;2(1):1-6. 12. Chakravarthy U, Bailey CC, Johnston RL, et al. Characterizing disease burden and progression of geographic atrophy secondary to age-related macular degeneration. *Ophthalmology*. 2018;125(6):842-849. 13. Lindblad AS, Lloyd PC, Clemons TE, et al. Change in area of geographic atrophy in the Age-Related Eye Disease Study: AREDS report number 26. *Arch Ophthalmol*. 2009;127(9):1168-1174. 14. Chakravarthy U, Anegondi N, Steffen V, Ferrara D. Visual functional loss in geographic atrophy (GA): learnings from lomalizumab trial data. Presented at: The Macula Society 46th Annual Meeting; February 15-18, 2023; Miami, FL.



Copyright © 2023 IVERIC bio, Inc. All rights reserved. US-GA-2300066